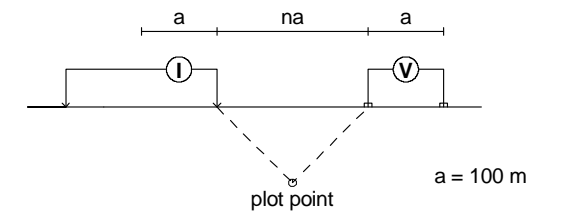


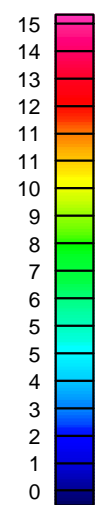
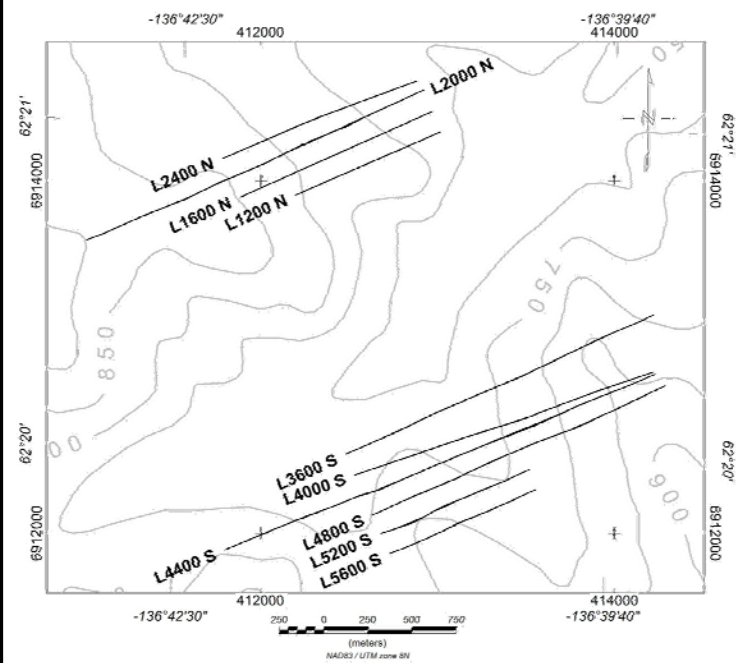
STACKED MODELS MAP CHARGEABILITY MODELS

Modified Pole-Dipole Array

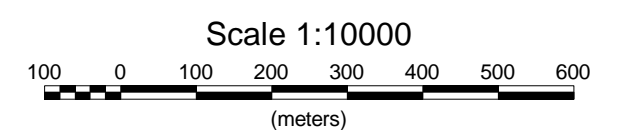


L3600S Stationary electrode at West end of line.
L4000S Stationary electrode at West end of line.
L4400S Stationary electrode at Stations 1100W & 650E
L4800S Stationary electrode at West end of line.
L5200S Stationary electrode at West end of line.
L5600S Stationary electrode at West end of line.

Receiver: Iris ElrecPro
Transmitter: GDD Tx-II 3.6kW
Data File: all lines 100m-final.gdb



Modelled Chargeability
mV/V



WESTERN COPPER CORPORATION
INDUCED POLARIZATION SURVEY
CARMACKS COPPER PROJECT
CHARGEABILITY MODELS - 100m DIPOLES
STACKED MODELS - SOUTH LINES

Mining District: Whitehorse Datum: Local Grid
NTS: 115 I/07 Drawn by: HS
Job: WRN-7506-YT Date: 10 Jan 08

AURORA GEOSCIENCES LTD.